

Anson County Residents, Our Animal Shelter Needs You!

Volunteers can make a tremendous difference in the welfare and survival of the animals. Information meeting set for February 4

The Anson County Animal Shelter is facing a serious need for volunteers to help with the care of animals there. With your help the lost pets, abandoned animals, strays and other animals facing a difficult time can receive the food, comfort, attention, love and the care they need. The shelter is unable to provide these basic needs without your assistance.

And, most importantly, a strong volunteer group at the shelter will help give the animals more time to be adopted before they are euthanized. This is a chance to lower the high euthanization rate.

In 2013 the Anson County Animal Shelter received 156 cats - 12 were adopted to new owners, 1 was returned to its owner, and 143 were euthanized. In 2013 the shelter received 507 dogs - 22 were adopted to new owners, 15 were returned to their owners, and 470 were euthanized.

In 2014 the Animal Shelter received 422 cats - 14 were adopted to new owners, 8 were returned to their owners, and 400 were euthanized. In 2014 the shelter received 678 dogs - 65 were adopted to new owners, 26 were returned to their owners, and 587 were euthanized. Also, in 2014 the shelter received 1 coyote and 1 skunk, both were euthanized.

In percentages, the euthanization rates at the Anson County Animal Shelter for 2014 were 94.8% for cats and 86.6% for dogs. These rates are too high, and with the community's help a lot more animals can survive and end up in loving homes.

A meeting has been set for Thursday, February 4 at 6 p.m. for those who are interested in volunteering. The meeting will take place at 605 McLaurin Street in Wadesboro, beside the Anson County Cooperative Extension office. For more information call 704-694-4832.

You CAN make a difference!

Bowman Senior High School Class of 1974

The Bowman Senior High School Class of 1974 wants each classmate to submit their current address, telephone number and email address in order for plans to be made for a class reunion. Please send the information to 74bearcats@gmail.com.

Obituaries ... continued from page 3

in Wadesboro in 1946, sang in the Chancel Choir for 60 years, taught Sunday school almost as long, and was ordained as a deacon.

Her love of theater and music led her to write and direct church plays and musical variety shows for the choir. Always the director, she was never on stage until years later when the Minister of Music convinced her to emcee the revival of one of her musicals. Having to joke and comment her way through extended costume changes for the cast members, it soon became evident that she was a hit. (She even thought she was pretty good herself.)

In 1974 Rilla and Brill built a vacation home near Boone, NC, and soon their summers were spent with new friends in the High Country, where they attended First Baptist Church of Blowing Rock.

Surviving are her sons, Haywood Brill "Wood" Huntley, Jr. (Beirne Donaldson) of Mendham, NJ and Shannon Townsend Huntley (Elaine) of Garner, NC; her grandchildren, Margo Rusmisl (Joseph Perl) of Burlington, VT and David Ray Bullard (Jessica) of Raleigh; her great-grandchildren, Keira Brooke Bullard and Kyle Jamison Bullard; her brother, James Townsend (Winona) of Lenexa, KS; her nieces and their families; as well as her wonderful loving church family.

In addition to her parents, she was preceded in death by her husband, Haywood Brill Huntley, and her great-granddaughter, Kaitlin Nicole Bullard.

The family wishes to express their sincere and heartfelt gratitude to Rilla's church family and friends for their loving care and support for her over the years, and most recently to the staff of Anson Health and Rehabilitation who have lovingly cared for her since November.

Rilla will be remembered for her gentle, loving spirit and quick wit. The nurses at Anson Health and Rehab fondly recall her combination of feisty and sweet as she often entertained them in the evenings and assisted with folding the napkins for the other residents, making sure it was done correctly. Her grace and charm remained with her until the

end, as she always said, "Yes, please."

In lieu of flowers, memorials may be made to First Baptist Church, Chancel Choir, P.O. Box 423, Wadesboro, NC 28170.

The arrangements are in care of Leavitt Funeral Home. Online condolences may be made at www.leavittfh.com.

Mr. Charles Franklin Meachum, Sr.

Mr. Charles Franklin Meachum, Sr., 79, died Saturday, January 30, 2016, at his home.

A graveside service was held on Monday, February 1, 2016, at Jowers Cemetery in Lilesville.

Charles was born December 15, 1936, in Anson County, a son of the late Willie Benjamin Meachum and the late Julia Grace Phillips Meachum. He was retired from Stegall Milling as a diesel mechanic with 55 years of service.

Surviving are his children, Charles Meachum, Jr., Matthew Meachum and Tina Meachum, all of Marshville; his daughter-in-law, Marilyn Meachum of Marshville; his grandchildren, Frankie Meachum, Jacob Meachum and Alexis Grace Meachum, all of Marshville; and his sisters, Joyce Ann Hildreth and Cathy D. Tarlton, both of Lilesville and Nancy Presley of Macon, GA.

In addition to his parents, he was preceded in death by his sons, Harry, Luke and

Jacob Meachum and brothers, William Bennett "Bill" and Harry Julian Meachum and sisters, Mary Frances Cassidy and Violet Cornelia Meachum.

The arrangements were in care of Leavitt Funeral Home. Online condolences may be made at www.leavittfh.com.

Mrs. Phyllis Melton Wooten

Mrs. Phyllis Melton Wooten, 62, died Friday, January 29, 2016, at Carolinas Medical Center Union in Monroe.

The family will greet friends from 6 until 8 p.m. on Wednesday, February 3, 2016, at Leavitt Funeral Home in Wadesboro.

Phyllis was born in Chesterfield County, SC, a daughter of the late Marvin McCoy Melton and the late Grace Allred Melton.

Surviving are her husband, Eddie Wooten of the home; her son Shawn Quick of Baden; and her brother Ronnie Melton of Cheraw.

In lieu of flowers, memorials may be made to Anson County Animal Shelter, 101 S. Greene St., Wadesboro, NC 28170.

The arrangements are in care of Leavitt Funeral Home. Online condolences may be made at www.leavittfh.com.

OLIVER'S HOMETOWN RESTAURANT & BAR

1/2 PRICE APPETIZERS

Tuesday-Friday 2-4pm
Dine in Only

WINE DOWN WEDNESDAY

All day Wednesday at Oliver's

1/2 PRICE BOTTLES OF SOUTHERN MEDLEY WINES

**Prices subject to change at any time.*

EVERYTHING MADE FRESH!
Daily Specials
Homemade Soups & Desserts
Prime Rib Fri & Sat Nights

TUESDAY - FRIDAY OPEN 11AM • SAT OPEN AT NOON
121 EAST WADE STREET IN UPTOWN WADESBORO
CALL FOR TAKE OUT ORDERS 704-694-2206

JBW

J.B. Watson & Co., PLLC
Certified Public Accountants

While you take care of business, let us take care of all your accounting needs.

+ CORPORATE, PARTNERSHIP & INDIVIDUAL TAX PREPARATION
+ INCOME TAX PLANNING
+ BUSINESS CONSULTING

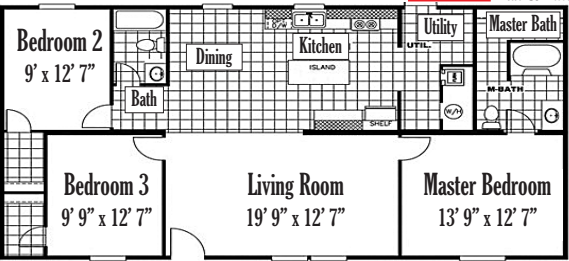
+ BOOKKEEPING & PAYROLL SERVICES
+ COMPILATION, REVIEW & AUDIT SERVICES

120 South Rutherford Street
PO Box 341
Wadesboro, NC 28170

Phone: 704-694-5174
Fax: 704-694-6970
Email: jhanna@jbandco.com

THE MONEY HOME Delivered to Site & Set Up

28x48 3 BEDROOM 2 BATH Thermopane Windows, Refrigerator, Range, Dishwasher, Heat Pump, Footings & Brick Skirting, Steps, 200 Amp Electrical Service, Plumbing, Permits \$59,995 Plus Tax & Title



No land improvements included, but can be added.
1ST CHOICE HOME CENTERS
2008 E Roosevelt Street (Hwy 74)
Monroe • 704-225-8850
www.1stchoicemonroe.com

SATURDAY NIGHT FEVER THE MUSICAL

Feb. 11 at 7:30 p.m.



Coming to the Cole Auditorium

1042 W. HAMLET AVE. | HAMLET | NC

All the magic and music of the 1977 movie is brought to the stage by this Broadway production.



Ticket Cost: \$40
**Price includes sales tax.*
Call the Box Office to reserve your seats!
(910) 410-1691

Box Office Hours
Mon. - Thurs.
8:30 a.m. to 4:30 p.m.
&
Fri. 8:30 a.m. to 2 p.m.



Mattress Fundraiser



Anson High School Cafeteria

FRI., Feb. 5th: 5 - 9pm | SAT., Feb. 6th: 10am - 3pm

GREAT CHOICES

Any size available. Fits all budgets, lifestyles, and comfort levels.
Name brand mattresses such as Laura Ashley, King Koil, and Duck Dynasty.
Plush, firm, premium euro tops, luxury pillow tops, memory foams, and more.

GREAT PRICES

Huge savings.
30 - 60% off retail pricing.
Credit cards accepted.
All mattresses covered by manufacturers' warranties.
Delivery available.

GREAT CAUSE

Support the kids.
Support the Bearcats Athletics Support Foundation.

