

## Anson County 4-H Clover Crawl Social is Back!

Anson County 4-H and 4-H Youth Promise is pleased to announce that the Clover Crawl is back. The event will be held Friday, March 16 at the Twin Valley Country Club in Wadesboro from 7 p.m. until midnight. The Clover Crawl is an adult event, 21 and over. The event will be sure to bring an evening of fun, food, dancing and great socializing. Heavy Hors D'oeuvres and drinks will be served. This year's DJ/Entertainer is 4-H alumnus Ryan Short of Ryan Short Entertainment (www.ryanshort.net).

Funds raised will be used to support on-going 4-H youth programs in Anson County. Advanced tickets are \$25 per person and can be purchased at the Extension Office located at 501 McLaurin Street in Wadesboro, Lacy's, or from committee members and staff. Ticket price at the door will be \$30. The fundraiser helps make up dollars lost due to shortfalls and cutbacks in funds that have traditionally provided 4-H programming and operating budgets. The dollars raised from the Clover Crawl will support programs that address the well being of youth, families, and communities in Anson County.

4-H programs annually reach over 1,000 young people in the community. Youth participate in activities and programs such as school enrichment, summer camps, community service and other year round educational programs. Anson 4-H and 4-H Youth Promise also work with adults, volunteer leaders and youth to provide community projects, parenting skills and enhanced leadership abilities. All 4-H programming is available to any youth between ages 5-19.

The fundraiser was a popular success last year. They are optimistic that they will have an even better response this year. 4-H programs have had much impact on youth in this county through the years. With the public's help and support, programs can continue to make significant contributions to their future, and the future of our county.

If you would like to learn more information about this event please contact Roshunda Blount, 4-H Agent or Erin Dempsey, Program Director at 704-694-2915.

## Wingate University Presents an Evening with Author Ron Rash

Friends of the Ethel K. Smith Library at Wingate University will present an evening fundraising event featuring Ron Rash, a prize-winning author, on Friday, March 30 at 7 p.m. at Rolling Hills Country Club in Monroe, N.C. An Author Talk discussing his recent book *The Cove* and book signing are included as well as a dinner buffet and silent auction.

In addition to *The Cove*, Rash has written three other novels, three collections of poetry and two collections of short stories. Reservations are required. Tickets are \$50 per person. A limited number of advance copies of *The Cove* are available. Contact Christy Inge at c.inge@wingate.edu or 704-233-8091.

## AES Gets a Visit from the Sheriff's Office



Mrs. Leigh Hill's Pre-Kindergarten class at Ansonville Elementary School had a special visit recently from Officer Shane Drake of the Anson County Sheriff's Office. Officer Drake came out to share his role as a deputy during the class' Community Helpers unit. Drake also shared ways to stay safe when the children are out in the community, and used a personal experience regarding his own child who attends the Pre-K class.

Drake reinforced that officers are our "friends" and that they help us in so many ways, not just "taking people to jail." One of the favorite parts of Officer Drake's visit was at the end when the children were allowed to sit in the front seat of his patrol car and turn the siren on with the flashing lights. Their smiles and laughter were as big and bright as the patrol car!



*This Caroline Jasmine is almost glowing with plenty of bright yellow blossoms to blow away any thoughts of wintry winds and cold weather. She's a beauty!*

## Marching In With Buds and Blooms

With such a mild winter thus far surely you've noticed the seemingly early arrival of our flowering buds and blooms bounty? Around Anson County there are Jonquils, Flowering Pear, Tulip and Cherry trees dressing up the landscape by putting on their prettiest petals for a picturesque show.

Let's hope March doesn't march right back in and take these beauties away with a blast of cold, chilly weather. I for one am hoping the pretty petals are here to stay, so you go girls! More "flower power" to you!

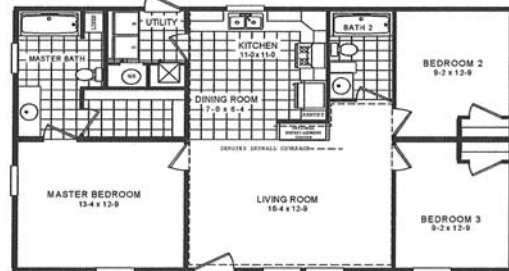
*Photo and story by Melanie Lyon*

## REMEMBER SENIOR DAY

**CAPTAIN D'S SEAFOOD KITCHEN**  
10 Dinners Starting at **\$3.99**  
All Day Wednesday

Each meal includes coffee or 16oz iced tea  
126 West Caswell Street in Wadesboro

## ZERO Down Payment



**\$395\*** per month **3 Bedroom 2 Bath**  
360 mos. 6.5% APR \*Your land\*



**1ST CHOICE HOUSING IN MONROE**  
2008 East Roosevelt Street  
Monroe • 704-225-8850  
www.1stchoicemonroe.com

## Turn Your Tax Refund \$\$\$ Into Storage Solutions

*Rent To Own No Credit Check! Plus Financing Available!*

**We Also Carry Wooden Storage Buildings!**

**20 Minutes from Most Places in Anson County**

**CARPORTS • Trampolines**  
**Dog Kennels • Fencing**  
**Gazebos • Playsets (Vinyl & Wooden)**

*Free Delivery & Set-Up!*

*Our Lark buildings are built to Florida code with hurricane brackets throughout*

30 year Exterior Warranty • 2x6 Floor Joist, 16" Centers  
3/4" Plywood Flooring (screwed in) • Pre-Wired with Light and Power Outlets  
All Flooring Material Treated / 20 Year Guarantee • Double Braced Walls

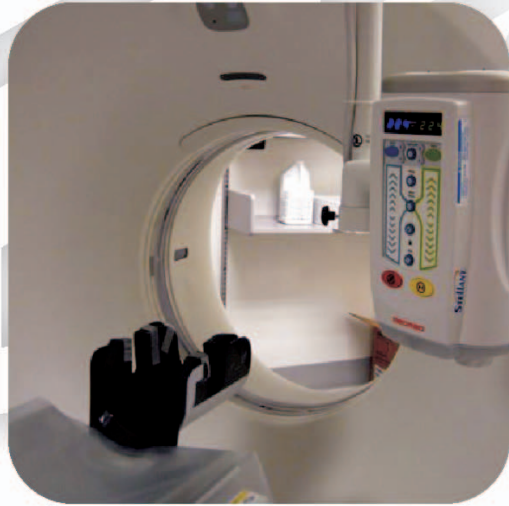
## NORRIS STORAGE BUILDINGS & CARPORTS

Call Ben Taylor at 910-205-2982 • Highway 74 Business • Hamlet, NC  
**At caution light just before Richmond Community College**

## Visit Our Newest Location



3229 Hwy 9 W  
Cheraw  
843-537-3150



## World-class technology. Family-friendly care.

An accurate diagnosis is key to any health concern and having access to sophisticated medical technology is vital. With the new GE BrightSpeed CT at Anson Community Hospital, greater peace of mind is here. Ask your doctor about the advanced CT imaging that's now even more convenient.



## Anson Community Hospital

*Uncompromising Excellence. Commitment to Care.*

500 Morven Road | Wadesboro, NC 28170 | 704-694-3472  
www.carolinamedicalcenter.org

## Eastgate Stadium Cinemas

### REAL 3D PRESENTATION

Additional \$2 charge per ticket for 3D presentation

Movie before 6pm only \$4.50

Adults: \$6.50  
Kids (Under 11) & Seniors only \$4.50

**Super Special Combo**  
Large Popcorn & 2 large drinks with 1 refill \$9

For movie listing call 704-982-9315 or www.southeastcinemas.com

823 Hwy 24/27 East Albemarle