

# FarmHouseBuffet

Ansonville, NC • 704-826-8563

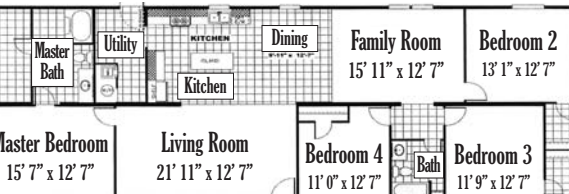
**Seafood Buffet & Menu Items**  
Friday & Saturday 4:30-10

**Sunday Country Lunch**  
Buffet 11:30-4

8018 Highway 52 North in Ansonville

**\$84,995\*** Delivered to Site & Set Up  
\*Plus Tax & Title

**4 BEDROOM 2 BATH** Price includes heat pump, two 4x6 decks + steps, plumbing under home, concrete footings, brick skirting, electrical 200 amp service (home only), setup, blocked & tied down plus county permit.



No land or land improvements are included.  
**2008 E Roosevelt St (Hwy 74)**  
Monroe • 704-225-8850  
www.1stchoicemonroe.com

1ST CHOICE HOME CENTERS

## Blood Drive at McLeod Health August 21

McLeod Health, located at 711 Chesterfield Highway in Cheraw, is hosting a Blood Drive on Thursday, August 21, from 12 noon to 5 p.m. All donors who come to give blood will receive a \$5 Amazon.com gift card.

To schedule your donation time please contact Arielle Williams at 843-287-8183 or visit [www.RedCrossBlood.org](http://www.RedCrossBlood.org) and use sponsor code: McLeod. You can streamline your donation experience and save up to 15 minutes by visiting [RedCrossBlood.org/Rapid-Pass](http://RedCrossBlood.org/Rapid-Pass) to complete your pre-donation reading and health history questions on the day of your appointment.

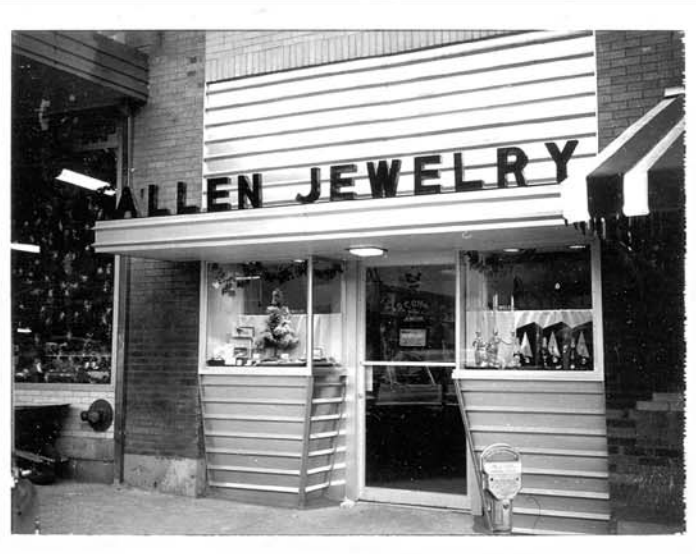
## Ladies Out at Grace Senior Center

Ladies Out is held every Monday at 1 p.m. at Grace Senior Center. To find out what that is, and register, call 704-694-6616.

Grace Senior Center is located at 199 Highway 742 South in Wadesboro, just past IGA.

# Remembering.....

By Ed McBride



## Allen Jewelry

I doubt that many of you remember the alley that was on the south side of the H. W. Little & Company hardware store. It was for many years used by mules and wagons to go to the back entrance of H. W. Little's to unload a bale of cotton or whatever, and then load items bought from the store - then they came back through the alley onto Greene Street to head home!

This space was an ideal place to build the building pictured above - A. C. Allen Jewelry needed a smaller building near the square of town.

This unique store front was designed and built by Herman Marsh using stainless steel - "formed to his own design." I hand-made the metal letters and installed same on December 11, 1959. You will note also that in the above picture that Wadesboro had parking meters - they have long since "bit the dust!"

Can you believe that from the B. C. Moore & Son corner block going south were several dry

goods stores and dress shops? There were several offices upstairs - one of which was Dr. Joel Mauldin. In 1959 he opened his dental practice where I lettered his office doors. Outgrowing his space, he later moved his practice to the Smith Building. (Presently Punky Morton's office.) The Mauldins, after about eight years, returned to Albemarle to be near and care for his aging parents - continuing his practice there.

There are so many changes - all around - remember the A&P Grocery? Lacy's building originally was built for the A&P - this being the third store location in Wadesboro! (The Anson Social Services building was the final location before A&P closed for good.) Oh yes, Johnny Livingston is "serving New York Life - not Shell gasoline." (For years that building was a service station.)

These are certainly not all the changes on this side of one block, there are many stories, many happenings - so much to remember!!

MAKE AN APPOINTMENT BEFORE ITS TIME TO GO...



**Does Your Child's Eyesight Make the Grade?**



Vision problems are a leading cause of school performance problems, so be sure your child can see clearly at school.

Make an appointment with Dr. Kiker today for a complete eye exam.



Holly Allison Kiker, OD

**ANSON FAMILY OPTOMETRIC, PLLC.**

1134 Holly Street in Wadesboro

Mon-Thurs 8:30-5 & Friday 8:30-12:30 704-694-3618



# END OF SUMMER SALE

**ALL IN STOCK RIDING MOWERS & ZERO TURNS ON SALE THROUGH SEPT. 1**

**PRICED TOO LOW TO ADVERTISE!**



**FEATURING Jonsered®**

## CARPENTER SALES AND SERVICE

**Your Outdoor Power Equipment Source**

21 Freedom Road (Highway 74) • Polkton 704-272-8573  
(Across from SPCC) Check out our Facebook page for more details.

**We Offer Repair Services for all Types of Outdoor Equipment**

## Rotary Program on Cyber Security and Cyber Safety is this Thursday

With hacking and other computer-related security issues prevalent in the national news lately, members of the Wadesboro Rotary Club will hear a timely and helpful presentation at their Thursday, August 9 meeting. Oscar Gonzalez, Cyber Crime Technology program lead and an Information Technology instructor at South Piedmont Community College, will address cyber security threats and cyber safety in his presentation to the 55-member Rotary Club of Wadesboro.

An instructor for 17 years, Gonzales has extensive experience teaching computer programming, computer networking, Microsoft Windows servers and operating systems, databases, system analysis and design, security, computer forensics, computer crime investigation and business e-commerce. He was instrumental in the acquisition of a \$1.8 million National Science Foundation grant for the Advanced Cyberforensics Education Consortium. He is a member of the North Carolina FBI InfraGard Charlotte Chapter.

Gonzales holds a bachelor of science degree in Computer Information Systems and a master's degree in Management Information Systems. He is Internet and Computer Core certified and is a certified Internet Webmaster.

The Wadesboro Rotary Club is among 35,000-plus clubs in Rotary International, a global organization with more than 1.2 million members. Rotarians work together to promote peace, fight disease, provide clean water, sanitation and hygiene, save mothers and children, support education, and grow local economies.



**1328 US 74 West**  
(Beside the Hub)  
**Wadesboro, NC 28170**  
**980-278-8012**

## DISTRIBUTORS OF TURKEY, CHICKEN & SWINE EQUIPMENT

G&M Sales of Eastern NC is a full line stocking distributor of agricultural, commercial and industrial equipment and supplies.

G&M has been selling and servicing the poultry and swine industry for more than 50 years. We represent most major brands recognized as industry leaders. Whether it's retrofitting your existing farm or installing equipment for your new buildings, G&M Sales should be your next call.

Our state of the art service department is equipped and knowledgeable in today's modern swine and poultry houses - 24/7.

G&M Sales also has a dedicated and experienced staff to answer your technical questions.

**After Hours Service 704-292-4830 www.g-msales.com**