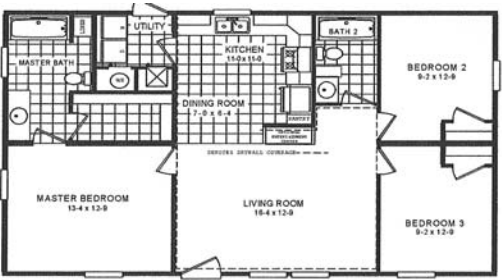
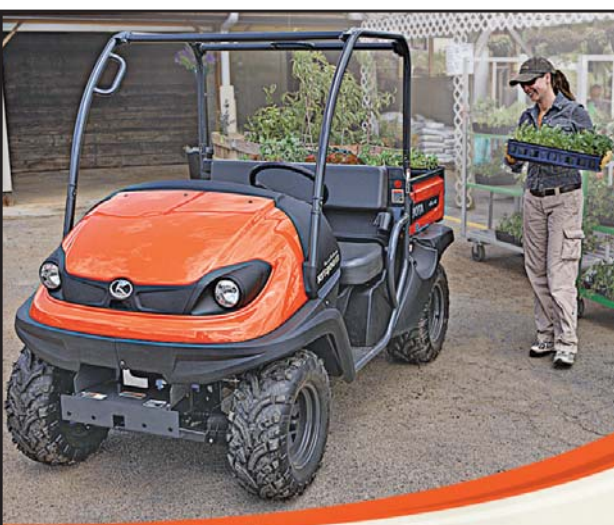


Off Frame Modular



\$77,000 TURN KEY JOB 3 Bedroom
2 Bath

1ST CHOICE HOUSING IN MONROE
2008 East Roosevelt Street
Monroe • 704-225-8850
www.1stchoicemonroe.com



Mid-size utility. Super-size versatility.
From property maintenance and livestock chores to construction sites, hunting and camping, Kubota's RTV400Ci is super-versatile and super-dependable. Not to mention super affordable. See one today in Kubota orange or Realtree® Hardwoods Camo.

- New! Fuel-injected 16 HP gasoline engine
- Exclusive CVT Plus transmission

BROOKS Sales, Inc.
3144 Highway 74 East
Monroe
704-233-4242
Mon - Fri
7:30 am - 5:30 pm
Saturday 8 - 12 noon
www.BrooksSales.com

Kubota www.kubota.com
Optional equipment may be shown.
©Kubota Tractor Corporation, 2012

Volunteers Needed for Anson County Day of Caring October 5

Volunteers will show they care throughout Anson County by raking leaves and washing windows during the 9th annual Day of Caring, scheduled for Saturday, October 5th. The Day of Caring is a community-wide service project that serves as the official kickoff to the Anson County United Way campaign.

"Last year's Day of Caring was comprised of 250 volunteers making up 25 teams taking on 55 project sites," Ashley Rivers, Day of Caring chair said. "We are hoping to top the number of teams and projects this year."

Typical chores include cutting grass, pruning shrubs, trash pickup, window washing, and cleaning gutters at the homes of elderly and disabled citizens. Other projects include sprucing up non-profit agencies and organizations. Volunteer teams can consist of two to ten people and must pre-register so they can be given an assignment.

"The Day of Caring has such a positive impact on the people of Anson County. On this day, the elderly and disabled feel special and important. It brings a smile to their faces when their homes and yards receive special attention," said Larry Adams, a community volunteer.

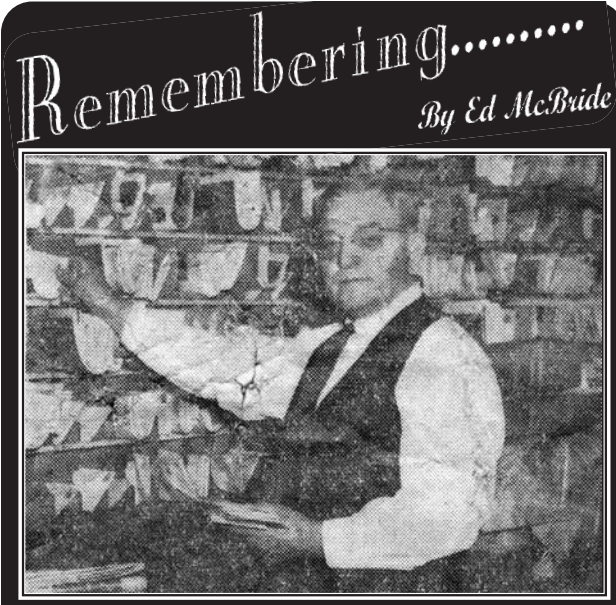
Day of Caring volunteers will gather for the 7:30 a.m. kickoff and a continental breakfast at the Wadesboro Town Square. Teams from a variety of businesses, churches and civic organizations will scatter across the county to predetermined sites. First Baptist Church of Wadesboro has partnered with United Way to complete community service projects as well as serve lunch to volunteers.

Anson County raised \$87,400 through United Way of the Central Carolinas last year. All of the money raised stays in Anson County to help fund programs such as diabetes education with Anson Community Hospital, literacy efforts through the Anson County Partnership for Children, and the support of domestic violence victims through the Anson County Domestic Violence Coalition.

In conjunction with United Way's Day of Caring, canned goods are being collected for families in need. Canned goods will be distributed by Anson Crisis Ministry. Donations can be dropped off at the Grace Senior Center, located on Highway 742 South just past Wadesboro IGA, the week prior to the event. There will also be collection barrels on the square of Wadesboro at the Kickoff on October 5. Last year over 840 pounds of canned goods were collected.

If you would like to register to volunteer or request help from volunteers, call Ashley Rivers at 704-848-4121 or Cindy Taylor-Kupfer at 704-694-2600. Team and Project Site Applications are available through the Anson County Chamber of Commerce and Town of Wadesboro websites: www.ansoncounty.org and www.cityofwadesboro.org. The deadline for submitting applications is Friday, September 13th.

Hunter Ratliff, son of Bud and Kimberly Ratliff, is pictured here holding a United Way sign at last year's Day of Caring Kick-Off ceremony.



Remembering... By Ed McBride

Anson Mailman's Service

Can you even dream of mail service a hundred years ago? No paved roads - and John Watson was hired to carry the mail throughout Anson County...sometimes with a horse and buggy, in later years with his vehicle. Would you dare to remember the "mail miles" driven, and on such roads as existed then? Some of those roads have only recently been improved and paved!

In Mr. Watson's earlier years on Route One it was 24 miles. Later it grew to 60 miles plus.

Nowadays we would shudder to think of the many miles of experiences involved years ago with the mail system...getting the mail out. It was mostly letters, but included cards, magazines and parcels.

Something mail carriers like Mr. Watson did for people along his route was deliver eggs, vegetables, a jar of jelly or whatever from one neighbor to another neighbor down the route. Quite often there was some for the mail carriers to keep too!

So many people, so much history - it does seem like another world!
Thanks, Ed

NC 10% Campaign Records \$40 Million in Local Food Purchases

In just three years the NC 10% Campaign, which encourages all North Carolinians and businesses to spend 10 percent of their food dollars on locally produced foods, has logged more than \$40 million in expenditures. The campaign, which kicked off in July 2010, now counts more than 6,500 individuals and 850 businesses among its supporters.

"Reaching this goal is a testament to the commitment of our partners to source and purchase North Carolina foods whenever possible," says Teisha Wymore, state coordinator of the NC 10% Campaign.

The NC 10% Campaign, which began in July 2010, aims to create a local food economy in North Carolina. Supporters sign up on the campaign's website, nc10percent.com, and record their local foods purchases each week. The campaign's database records purchases, and allows individuals and business partners to track their progress over time.

The NC 10% Campaign is an initiative of the Center for Environmental Farming Systems (CEFS), a partnership of NC State University, NC Agricultural & Technical State University, and the NC Department of Agriculture and Consumer Services. CEFS's mission is to develop and promote food and farming systems that protect the environment, strengthen local communities and provide economic opportunities in North Carolina and beyond. For more information please see www.cefs.ncsu.edu.

The campaign has social media, educational and community-building components as well. The NC 10% Campaign has been so successful that other states, including Connecticut, Michigan and South Carolina, are beginning to use it as a model for local food initiatives in their own regions.

Funded by the Golden LEAF Foundation, the NC 10% Campaign works with the NC Cooperative Extension Service in all 100 North Carolina counties and with the Eastern Band of Cherokee Indians. For more information or to join the campaign, visit nc10percent.com.

INTRODUCING OUR NEW Family Nurse Practitioner



Sandra Teal, FNP

Carolinas Primary Care welcomes certified family medicine nurse practitioner, Sandra Teal to its office. As a family nurse practitioner, Mrs. Teal helps patients manage acute and chronic illnesses from childhood through adulthood. Mrs. Teal's services include diagnosing illnesses, prescribing medication and therapy, conducting routine check-ups, ordering patient lab tests, and focusing on disease prevention.

Please call Carolinas Primary Care at 704-694-DOCS (3627) to schedule an appointment today.

Carolinas Primary Care
Uncompromising Excellence. Commitment to Care.
www.carolinashealthcare.org

1913-2013
100 years
Anson Community Hospital

919 East Caswell Street | Wadesboro, NC 28170 | 704-694-DOCS (3627)
Appointment Hours: Monday-Friday: 8am-5pm

Deposits Still Being Accepted for Atlantic City Trip

The Grace Senior Center is still taking deposits on a trip to Atlantic City, scheduled for September 17th-19th. The price is \$243 per person with double occupancy and \$323 for single occupancy. The package includes 2 nights lodging at the Resorts Casino Hotel, \$40 slot bonus, 2 buffet dinners, a visit to the Atlantic City Boardwalk, souvenir gift, luggage handling, taxes, meal gratuities and motorcoach transportation.

The deadline to pay for the trip has been extended while seats are available. Triple and quad occupancy is available. Persons interested should call Grace Center at 704-694-6616 to register or for more information concerning the trip.