



Our Vote, Our Power

The strength of our community lies in our unity. If we don't step up, decisions will be made without us.

ELECTION DAY

Tuesday, November 7, 2023

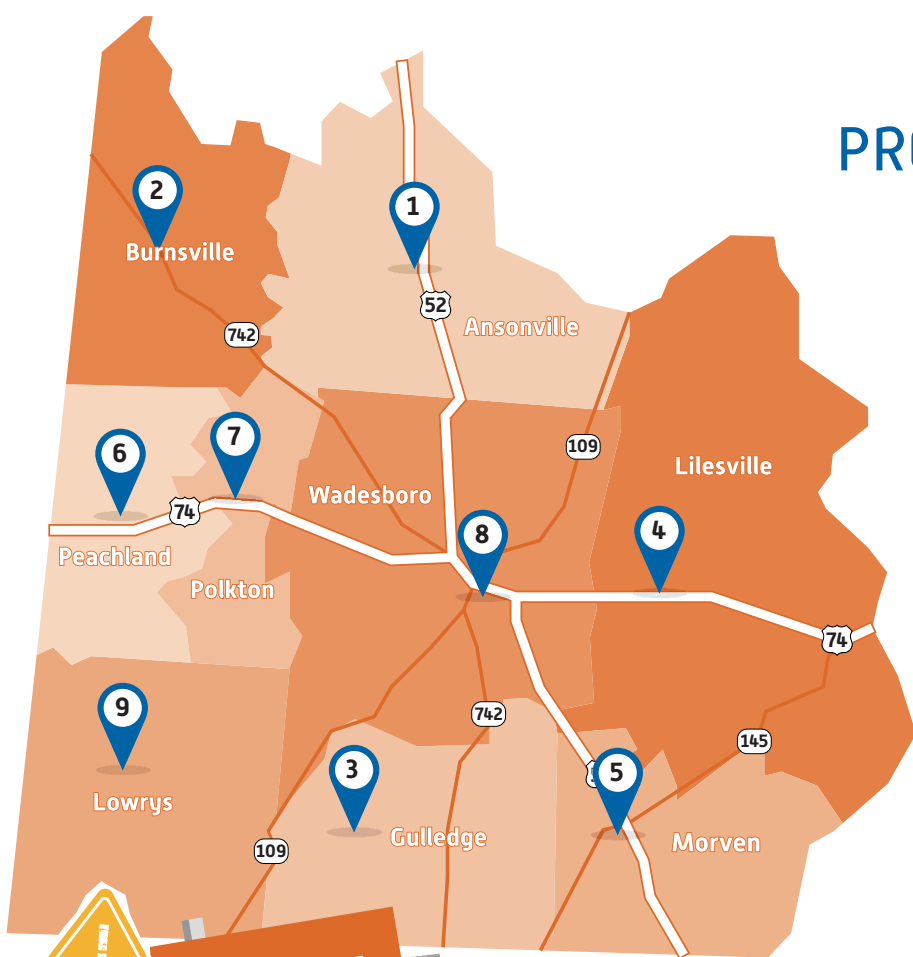
Vote from 6:30am to 7:30pm at your assigned polling location
(If you are in line by 7:30pm, you can still vote)

✓ You can **ONLY** vote on Election Day this year

✓ There is **NO** Early Voting or Voting by Mail in Anson County for this election

Anson County PRECINCT VOTING LOCATIONS

Note: On election day, you MUST vote at your assigned polling location

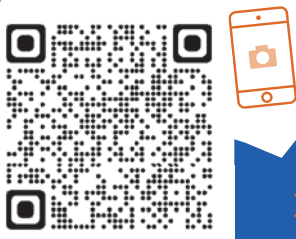


- 1 **Ansonville Fire-Rescue**
9145 US Hwy 52 N,
Ansonville, NC 28007
- 2 **Burnsville Fire-Rescue**
33 Rescue Rd.
Polkton, NC 28135
- 3 **Gulledge Fire Dept.**
34 Chewning Rd.
Wadesboro, NC 28710
- 4 **Lilesville Fire Dept.**
202 W Wall St.
Lilesville, NC 28170
- 5 **Morven-McFarlan Fire Dept.**
242 E Main St.
Morven, NC 28119
- 6 **Peachland Fire Dept.**
35 E Passaic St.
Peachland, NC 28133
- 7 **Polkton Fire Dept.**
61 W Polk St.
Polkton, NC 28135
- 8 **Wadesboro-Lockhart Taylor**
514 N Washington St.
Wadesboro, NC 28170
- 9 **White Store-Community Bldg.**
5672 Union Church Rd.
Peachland, NC 28133

**Photo ID's are
REQUIRED
to Vote**

*Photo ID Exception forms will be available

Scan here for more information, including all you need to know about photo IDs for voting.



>> www.newruralproject.org

@newruralproject

New Rural Project is a 501(c)(4) civic organization engaged in voter education.