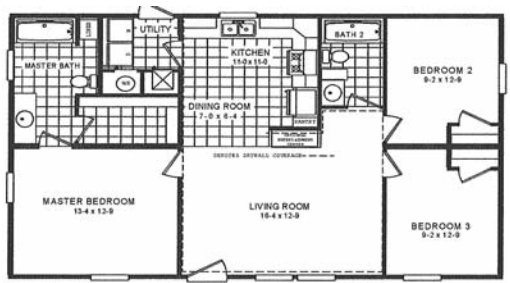


Off Frame Modular



\$79,900 TURN KEY JOB 3 Bedroom 2 Bath

1ST CHOICE HOUSING IN MONROE
 2008 East Roosevelt Street
 Monroe • 704-225-8850
www.1stchoicemonroe.com

We Have 15 Passenger Rental Vans for Your Holiday Trips!

Van Rentals
 15 Passenger
 \$89.95 Per Day



10% Discount Rates for Churches
 Call Doug, Gary or Paul
 For Price & Availability at 704-982-1122

LUM'S FORD
 Highway 24-27 Bypass East at Eastgate Shopping Center Albemarle
 Call 704-982-1122 • 1-800-951-1122
 Visit us online: www.lumsford.com

The 2nd Pre-Thanksgiving Anniversary for Evangelist Brenda "BJ" Pratt
Friday, November 15 6pm
 Emcees: Bro Fred Burton from WLWL Mrs. Christine Hall
 Featuring: Full Faith Gospel Choir, The Sensational Brown Brothers, Doc McKenzie & The Hi Lites, Unspoken Words of Praise, Ernest Pearson & The Singing Disciples, Legacy, Brother Joe McClary, Flat Rock MBC Church Choir
LOCKHART-TAYLOR CENTER • 514 N Washington St, Wadesboro
 For information & vendor opportunities call 704-475-5199



Advance Tickets \$15
 At The Door \$20
 Children 6 to 12 \$5
 Doors Open 5pm

Wadesboro Rotary Club
BBQ & Cow Pasture Bingo



Tuesday, November 5th ELECTION DAY
 At the National Guard Armory on Anson High School Road

Cow Pasture Bingo
 Win \$1,000 !!!
 Tickets \$10
 Winner determined by survey. Decision of judges is final.

Pork BBQ or Adobe Chicken
 \$8 each • 11am to 6pm
 Plate includes BBQ or chicken, baked beans, slaw, roll & dessert.
 Eat in or take out! Baked items too!

Deliveries available on bulk orders
 All proceeds go to support Rotary projects

1/2 PRICE At **FEED MY LAMBS**
THRIFT STORE
 Clothing, Household Items, Shoes, Electronics, Toys, Furniture & More!
\$5 OFF Bring this ad & receive \$5 OFF on sales of \$25 or more before tax!
Thursday, Oct 31 thru Friday, Nov 8

FEED MY LAMBS MINISTRIES & THRIFT STORE
 2290 Highway 74 West in Wadesboro Just beyond Wal-Mart 704-695-1820
www.FeedMyLambsWadesboroNC.com • Store Hours: Tue, Thu & Fri 10-5 & Sat, Nov 2 10-2

Church News

OCTOBER 27 - 30 Homecoming Services
 At Church of God of Prophecy. Sun-Pastor Iris Tillman 11am. Mon-Rev L. Parson, Tue-Rev James Gibson & Wed-Rev Ivan Ledbetter, all at 7pm

NOVEMBER 1 & 2 Youth Summit
 "Youth Explosion: Engaging the Community" at Ebenezer MBC. Fri-6pm praise & worship w/mime, singing, dancing & stepping. Sat 10-4 is Workshop for parents, youth, pastors & 1st ladies. Free admission, food provided

NOVEMBER 2 Ladies Day Out
 At Rock Hill MBC, 2pm w/food, fun, fellowship & movie at 4pm
Friends & Family Day
 At Thomas Chapel, 6pm
Women's Day Out
 At Rock Hill MBC, 2pm followed by movie at 3:30pm w/activities & snacks. All women encouraged to attend & join the fun

NOVEMBER 2 & 3 4th Anniversary
 Of Pastor & 1st Lady Dr Jerry & Min Reeta Tyson at Flat Rock MBC. Sat-5pm w/Rev Joletha Dockery. Sun-Rev Joel Briley at 11am

NOVEMBER 3 15th Anniversary
 Of Bishop Arvester Lindsey at New Jerusalem Holiness Church w/Bishop Jerry Hardison 3pm

Missionary Day
 At Harris Chapel AME Zion w/Rev Phyllis Gill & her congregation at 3pm. Missionaries asked to wear white. Everyone invited

Pastoral Anniversary
 For Rev Donna McNair at Fairview COG, 3pm w/Pastor Iris Tillman
Family & Friends Day
 At Evangelistic Outreach Center w/Pastor Terry Little at 3pm

NOVEMBER 3, 10, 17, 24 Friends & Family Month
 Ebenezer MBC will celebrate each Sunday in November at 10am. Everyone is welcome

NOVEMBER 9 Barbabecue
 At Lilesville UMC, 11am-7pm w/barbecue, baked beans, slaw, rolls, dessert & tea for \$8. Everyone invited

Pre-Anniversary Luncheon

By Women of Grace at Poplar Springs MBC w/Rev Judy Little at 10am. All women are invited

NOVEMBER 10 Friends & Family Day
 At East Rock MBC, 3pm w/Rev Fannie Clyburn. Dinner after morning service

Special Music
 By Cory Wallace 11am at Mt Carmel Baptist Church in Peachland

141st Anniversary
 At Mt Pleasant MBC, 1442 Morgan Sellers Rd, Wadesboro w/Rev Nathaniel Floyd at 11am & Rev R.E. Blount at 3pm

5 Year Anniversary
 Of Pastoral Service by Pastor Deidre Ledbetter-McBride at Poplar Springs MBC at 2:30pm w/Pastor Sylvia McLendon & guest choirs

Men's Booster Program
 At Streater Grove AME Zion w/Rev Samuel Richardson at 3pm

NOVEMBER 15 - 17 Women's Conference 2013
 "Adorned Women of Armor" at Ebenezer MBC. Fri-7pm, Sat-9am & Sun-10am. \$20 for conference or \$10 per day

NOVEMBER 17 Pastoral Appreciation
 For Pastor Cindy Wiggins & Senior Deacon John Wiggins at House of Faith Outreach Ministries 4pm w/Overseer Angelina Sumpter

Fundraising Program
 At Cedar Creek Church, 2:30pm w/Min Thomas Robinson

Missionary Program
 At Lindsey Chapel Friendship COG 3pm w/Pastor Dietrich McBride. All are invited

31st Pastoral Anniversary
 Of Pastor Lennon Parson & 1st Lady Parson at West Rocky Ford MBC, 4pm w/Apostle Annette Ross of Charlotte. Everyone is invited

NOVEMBER 23 6th Anniversary Concert
 By The Sons of Saron at Harvest Ministries, 6pm w/the Singing Disciples, the Diamonds, the Sensational God's Sons, the Brace Boys & Legacy. Food, prizes & more. \$5 advance, \$7 at door

NOVEMBER 24 Missionary Program
 At Lindsey Chapel Friendship COG w/Pastor Dietrich McBride at 3pm. All are invited

Men's Day Celebration
 At Harris Chapel AME Zion, 3pm w/Pastor Carl Ingram & congregation. All men asked to wear black. Everyone invited

DECEMBER 1 - 4 Revival
 At Mt Carmel Baptist

NOVEMBER 2 Anson Farmer's Market
 Fresh, local vegetables, fruits & more Wed & Sat, 7am-1pm. Hwy 52 S, Wadesboro

NOVEMBER 2 Discover Anson Bicycle Ride
 Register 8am in Ansonville for either 30, 50 or 75 mile ride. \$25 if paid before Oct 19, \$30 after. Info 704-694-4181 or www.ansoncounty.org

NOVEMBER 2 Solar Power Workshop
 Free at Hampton B. Allen Library, 2-4pm. Info 704-851-3925

NOVEMBER 10 Chili Cookoff Competition
 At Southern Medley Wine Cellar, 118 N Rutherford St in Wadesboro at 2pm. Enter to win cash prize or come to eat! \$5 to taste and vote. To

EXECUTIVE INN
 Singles \$45 + tax (2 persons only)
 Doubles \$52 + tax (2 persons only)

BRING THIS AD IN FOR THE SPECIAL
 209 East Caswell Street (Highway 74)
 Wadesboro • 704-694-7070

WADESBORO LUMBER & BARN
 213 Salisbury Street, Wadesboro, NC
 Hours: Monday-Friday, 8am-5pm, Saturday, 8am-1pm
 704-694-3996
 For All Your Building Needs!

C&M AUTO SUPPLY
 Your locally owned Auto Parts Store
 Hwy 74, Wadesboro • 704-694-5167

Badcock HOME FURNITURE & more
 Hwy. 52, South • P.O. Box 856
 Wadesboro, NC 28170
 Ph: 704-694-4178
www.badcock.com

SOS OFFICE SYSTEMS
 • Copiers • Facsimile • Typewriters
 • Cash Registers • Calculators • Furniture
 • Supplies • Sales • Service
 504 E. Broad Ave • Rockingham
 800-875-2669

CARPENTER & FLAKE, PLLC
 Attorneys At Law
 Auto Accidents & Personal Injury, Wrongful Death, Real Estate, Estate Planning & Formation, DWI & Traffic Tickets, Criminal Law, Divorce & Family Law, Wills & Estates
 704-694-3000
 123 E. Martin St, Wadesboro, NC

From Your Friends At PARSONS DRUG
 Serving Anson County for over 100 years
 "On The Square"
 Wadesboro • 704-694-2218

PEE DEE ELECTRIC
 Membership Corp.
 Hwy. 52 S. Wadesboro
 Midway Rd. Rockingham
 "Owned by those we serve."

H. W. Little & Company
 Hardware & More!
 Uptown Wadesboro
 704-694-2214

DAYS INN of Wadesboro is NOW EXECUTIVE INN
 209 East Caswell Street in Wadesboro
 704-694-7070

MEADOWVIEW TERRACE
 Meadowview Terrace of Wadesboro
 123 Anson High School Road
 Wadesboro, NC 28170
 Ph: 704-994-9050

NOVEMBER 24 Missionary Program
 At Lindsey Chapel Friendship COG w/Pastor Dietrich McBride at 3pm. All are invited

Men's Day Celebration
 At Harris Chapel AME Zion, 3pm w/Pastor Carl Ingram & congregation. All men asked to wear black. Everyone invited

DECEMBER 1 - 4 Revival
 At Mt Carmel Baptist

NOVEMBER 11 Veterans Day Parade
 In uptown Wadesboro, 10am. Entry forms at Chamber of Commerce & HW Little & Co. Info tward@co.anson.nc.us or 704-694-4418

NOVEMBER 12 Women's League Meets
 Noon-1pm at Twin Valley Country Club w/speaker Bonnie Morgan of Partnership for Children. Lunch \$8. RSVP 704-694-7853

NOVEMBER 16 Hospice Holiday Auction
 By Carolinas HealthCare Hospices, including Hospice of Anson County, 8am-2pm at First Baptist Church in Monroe. Free admission.

FRIDAY & SATURDAY SPECIALS

EXECUTIVE INN
 Singles \$45 + tax (2 persons only)
 Doubles \$52 + tax (2 persons only)

BRING THIS AD IN FOR THE SPECIAL
 209 East Caswell Street (Highway 74)
 Wadesboro • 704-694-7070

QUALITY FLORIST
 624 Salisbury Street
 Wadesboro
 704-694-4015
 Mon, Tue, Thu, Fri 9am-5pm
 Wed, Sat 9am-1pm
 When you care to send the best!

ADVERTISE HERE!
 Call The Express to find out how.
 704-694-2480

PIEDMONT FLOORING
 All Major Brands of Floor Covering
 Serta & Ornderest Bedding
 214 West Main Street in Marshville
 704-624-2211
 MAYTAG • FRIGIDAIRE • CROSLEY

ANSON RADIATOR SERVICE
 125 Stanback Ferry Road
 Wadesboro, NC
 704-694-2644
 704-289-7999
 Ted Stegall

PapaJoe's PIZZA
 Anson Station Shopping Center
 Wadesboro • 704-694-6666

Glenn Trexler & Sons Logging, Inc.
 "Freedom of Worship is a Precious Commodity"
WADESBORO

ANSON BANK & TRUST CO.
 704-694-2122
www.AnsonBank.com
 Member FDIC

Henry's Body Shop
 704-848-4989
 4225 Stanbackferry
 Ice Plant Rd • Litesville
 Owner: Robert & Lites Henry

Williamson Wrecker Service
 Since 1972
 704-694-4545

Touch of Class
 Expert Hair Design For Ladies & Gents
 Rita Phillips Shannon Brown
 704-694-6950

Church. Sun-6pm Rev Eddie Reynolds, followed by covered dish supper. Mon-Rev Bill High, music Mary Threatt & Terra Medlock, Tue-Rev Jeff Smith, music Greg Cook, Wed-Rev Riley Bacom, music Peggy Bivens, all at 7pm

ONGOING Bible Study
 Every Tuesday at 7pm at Expected End Ministries

light refreshments. To donate or for info call 704-292-2130

March for Babies
 March of Dimes event at Anson High School. Registration 9am, Walk 10am

NOVEMBER 18 Blood Drive
 At Anson Community Hospital, 1-4pm

NOVEMBER 19 Financial Aid Workshop
 For high school seniors & parents by College Foundation of NC at Anson High School Media Center, 6pm

Memory Screening
 Free at Grace Senior Center 10am-2pm. Info & register 704-694-6616

NOVEMBER 27 Deadline for Entries
 In Wadesboro Christmas Parade to be held Dec 5 at 4pm. Contact Chamber of Commerce 704-694-4181

NOVEMBER 29 & 30 Big Game Hunt
 By Anson County Chamber of Commerce. Register & info 704-694-4181 or www.ansoncounty.org

DECEMBER 5 Christmas Luncheon
 For senior citizens by Grace Senior Center at Lockhart-Taylor Center. 2 servings: 11am & 1pm. Info & register 704-694-6616

Events

WADESBORO CHIROPRACTIC
 207 Morven Road



Head Ache Neck Pain Back Pain
 Give Us A Call
 704 694-7246



Dr. Brian Dial

EXECUTIVE INN

FRIDAY & SATURDAY SPECIALS

EXECUTIVE INN
 Singles \$45 + tax (2 persons only)
 Doubles \$52 + tax (2 persons only)

BRING THIS AD IN FOR THE SPECIAL
 209 East Caswell Street (Highway 74)
 Wadesboro • 704-694-7070

EXECUTIVE INN
 Singles \$45 + tax (2 persons only)
 Doubles \$52 + tax (2 persons only)

BRING THIS AD IN FOR THE SPECIAL
 209 East Caswell Street (Highway 74)
 Wadesboro • 704-694-7070

EXECUTIVE INN
 Singles \$45 + tax (2 persons only)
 Doubles \$52 + tax (2 persons only)

BRING THIS AD IN FOR THE SPECIAL
 209 East Caswell Street (Highway 74)
 Wadesboro • 704-694-7070

EXECUTIVE INN
 Singles \$45 + tax (2 persons only)
 Doubles \$52 + tax (2 persons only)

BRING THIS AD IN FOR THE SPECIAL
 209 East Caswell Street (Highway 74)
 Wadesboro • 704-694-7070

EXECUTIVE INN
 Singles \$45 + tax (2 persons only)
 Doubles \$52 + tax (2 persons only)

BRING THIS AD IN FOR THE SPECIAL
 209 East Caswell Street (Highway 74)
 Wadesboro • 704-694-7070

enter call 704-994-2389 for details

NOVEMBER 11 Veterans Day Parade
 In uptown Wadesboro, 10am. Entry forms at Chamber of Commerce & HW Little & Co. Info tward@co.anson.nc.us or 704-694-4418

NOVEMBER 12 Women's League Meets
 Noon-1pm at Twin Valley Country Club w/speaker Bonnie Morgan of Partnership for Children. Lunch \$8. RSVP 704-694-7853

NOVEMBER 16 Hospice Holiday Auction
 By Carolinas HealthCare Hospices, including Hospice of Anson County, 8am-2pm at First Baptist Church in Monroe. Free admission.

FRIDAY & SATURDAY SPECIALS

EXECUTIVE INN
 Singles \$45 + tax (2 persons only)
 Doubles \$52 + tax (2 persons only)

BRING THIS AD IN FOR THE SPECIAL
 209 East Caswell Street (Highway 74)
 Wadesboro • 704-694-7070

EXECUTIVE INN
 Singles \$45 + tax (2 persons only)
 Doubles \$52 + tax (2 persons only)

BRING THIS AD IN FOR THE SPECIAL
 209 East Caswell Street (Highway 74)
 Wadesboro • 704-694-7070

EXECUTIVE INN
 Singles \$45 + tax (2 persons only)
 Doubles \$52 + tax (2 persons only)

BRING THIS AD IN FOR THE SPECIAL
 209 East Caswell Street (Highway 74)
 Wadesboro • 704-694-7070

EXECUTIVE INN
 Singles \$45 + tax (2 persons only)
 Doubles \$52 + tax (2 persons only)

light refreshments. To donate or for info call 704-292-2130

March for Babies
 March of Dimes event at Anson High School. Registration 9am, Walk 10am

NOVEMBER 18 Blood Drive
 At Anson Community Hospital, 1-4pm

NOVEMBER 19 Financial Aid Workshop
 For high school seniors & parents by College Foundation of NC at Anson High School Media Center, 6pm

Memory Screening
 Free at Grace Senior Center 10am-2pm. Info & register 704-694-6616

NOVEMBER 27 Deadline for Entries
 In Wadesboro Christmas Parade to be held Dec 5 at 4pm. Contact Chamber of Commerce 704-694-4181

NOVEMBER 29 & 30 Big Game Hunt
 By Anson County Chamber of Commerce. Register & info 704-694-4181 or www.ansoncounty.org

DECEMBER 5 Christmas Luncheon
 For senior citizens by Grace Senior Center at Lockhart-Taylor Center. 2 servings: 11am & 1pm. Info & register 704-694-6616

EYE CARE IS IMPORTANT

Accepting New Patients

We Accept Most Insurances

704-694-3618

Call for an appointment today

Locally Owned & Operated

ANSON FAMILY OPTOMETRIC, PLLC.



Holly Allison Kiker, OD

1134 Holly Street in Wadesboro (On Highway 74 across from Forbes Jewelers)
 Mon-Thurs 8:30-5 & Friday 8:30-3:30 704-694-3618