

Enjoy this Remembering column from 2008

**Ray SHANKLE Home Sales**

Ph: 910-582-5066  
 1570 E. US 74 Hwy  
 P.O. Box 1543  
 Hamlet, NC 28345  
 hrcray@carolina.rr.com

Hours:  
 MON-THUR 8am-6pm  
 FRI 8am-5pm  
 SAT.: 9am-1pm  
 SUN.: Closed

Licensed in North & South Carolina

**FINANCING AVAILABLE & LAND/HOME PACKAGES!**



**MODULAR STOCK MODULAR #3268 COMPLETE - \$124,900.00**

www.modular-home-nc.com

## Toys for Tots Motorcycle Ride is Saturday

Whether you ride or not, please come out for fun and to help Anson kids in need have a brighter Christmas

The Anson County Toys for Tots Motorcycle Ride will be held on Saturday, December 6. Everyone is invited to participate, whether you are a rider or not. A highlight of the event will be an auction for an official Carolina Panthers football which has been autographed by the entire team!

This special football is being held in the custody of Sheriff Tommy Allen until the day of the auction. You may contact Vancine Sturdivant at 704-848-4412 or any Toys for Tots Executive Board members to make a bid, or you can come to the event as a rider or non-rider and bid then. You do not have to be present to win. If you would like to see the football before December 6 you can contact Vancine or Sheriff Allen.

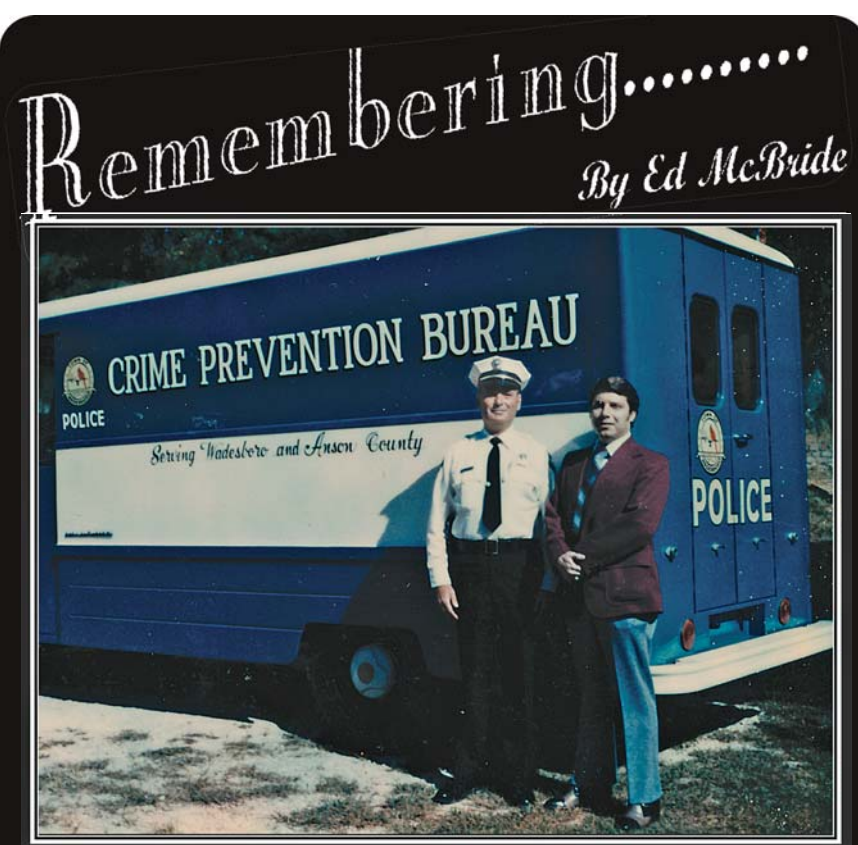
This fun event will help raise money that will be used to provide Christmas for many Anson kids who otherwise would have nothing on Christmas day. Please come and/or consider donating anything you can to brighten a child's life.

The Motorcycle Ride and Auction will take place at 10:30 a.m. at 302 Salisbury Street in Wadesboro.

## Woodmen of the World Christmas Party is Saturday

The annual Christmas Party held by Woodmen of the World Chapter 4 will be held on Saturday, December 6. The party will be held at the WOW Lodge Hall on Highway 74 west beginning at 6 p.m.

For more information contact Diane Shackelford at 704-694-4107.



## Remembering... By Ed McBride

### Crime Prevention Bureau

This one goes back a few years, at the time when W. K. (Bill) Aubry was Police Chief of Wadesboro. The young fellow in the picture with Chief Aubry is none other than the "Very Young" Tommy Allen, who, as an early beginning of his law enforcement career, was on the Wadesboro Police force.

The truck was a Chevrolet step-van fitted inside with the necessities to investigate and solve crimes "on the job" in Wadesboro. I always thought it was an attractive unit with the 8 inch

"Crime Prevention Bureau" letters in white with charcoal shadow down both sides, and the town seal on the sides, front and back (that I had the pleasure of designing "from scratch" in 1966).

I finished lettering this truck on October 17, 1974. Since that time Bill Aubry served the town until retirement and Tommy Allen was a town officer until 1978, then was elected Sheriff of Anson County. He has served 22 years - and is still going!

Bill Aubry is now deceased.

## Holiday Program at Rotary Planetarium called Season of Light

In a release from Wendy Efird of the Rotary Planetarium and Science Center: This month, the Rotary Planetarium and Science Center will present a special program called *Season of Light* that combines astronomy and holiday traditions. It's an elegant and sophisticated program about the coldest and darkest of seasons - a time which holds some of the warmest and brightest celebrations of the year.

This presentation traces the history and development of many of the world's most enduring holiday customs, all of which involve lighting up the winter season - from the burning yule log, sparkling Christmas tree lights and candles in windows, to the lighting of luminaries in the American Southwest and the traditional ritual of the Hanukkah Menorah.

The show also recounts the historical religious and cultural rituals practiced during the time of winter solstice - not only Christian and Jewish, but also Celtic, Nordic, Roman, Irish, Mexican and Hopi. It also takes a look at some of our more light-hearted seasonal traditions, from gift-giving and kissing under the mistletoe to songs about lords-a-leaping and ladies dancing, and the custom of decking the halls with greenery and candles. St. Nicholas, Sinterklaas, Kris Kringle, Father Christmas and Santa Claus all drop by as well.

Naturally there is some astronomy in *Season of Light*. Audiences learn a selection of northern hemisphere winter constellations, and find out why we even have seasons, as we demonstrate the sun's path across the sky throughout the year and the earth's tilt and orbit around the sun. And of course the program explores the possible astronomical explanations for a "Star over Bethlehem" in the last quarter of the show: comets, meteors, novae and supernovae, and planetary conjunctions.

Audiences will also have a chance to experience the planetarium's new full dome projection system. Seasonal stargazing as well as a trip through the solar system's planets will also be discussed. The *Season of Light* show will last approximately 35 minutes and is designed for all ages. The cost of the show and visiting the animal room at the Science Center is \$5 for adults and \$2 for children. All proceeds from admissions will help finance the purchase of future full dome digital movies. Seats are limited in the dome to 30. Reservations are preferred by calling the Rotary Planetarium and Science Center at 704-694-4417 ext. 01005 and leaving a message.

The show schedule is: Sunday, December 7 at 4 p.m.; Monday, December 8 at 2 p.m.; Thursday, December 11 at 6 p.m.; Monday, December 15 at 10 a.m. & 2 p.m.; Sunday, December 21 at 4 p.m.; and Monday, December 22 at 6:30 p.m.

## It's Barn Blast Time Again!

Tickets for the 9th annual Barn Blast fundraiser are available now at the Anson County Partnership for Children. The 2015 Barn Blast will be held on Friday, January 30 from 5 to 11:30 p.m. in the Ingram Room at SPCC's Lockhart-Taylor Center in Wadesboro. This fundraising event features dinner, dancing, drinks, silent auctions, live auction and lots of western themed fun.

Reserved tables for 8 are available for \$400 (\$50 per ticket). General admission tickets are \$60 each. After January 9 reserved tables increase to \$480 (\$60 per ticket) and general admission tickets will not be sold. Be sure to purchase your Barn Blast tickets before they sell out!

All profits from the Barn Blast are used in Anson County for the Partnership's programs for young children. These include Dolly Parton's Imagination Library which mails a book each month to over 1000 children in Anson County, as well as many other literacy and early childhood programs.

For tickets or more information about the 2015 Barn Blast, please call or come by the Anson County Partnership for Children, located at 117 South Greene Street in Wadesboro. 704 694-4036, [www.ansonchildren.org](http://www.ansonchildren.org)

## Chamber Ensemble Twilight Concert

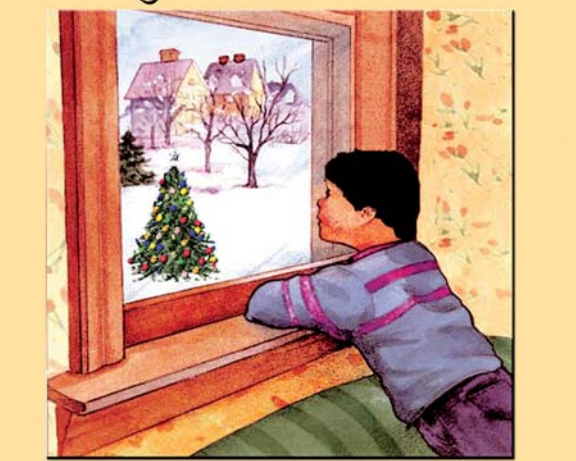
The Cheraw Arts Commission presents a Twilight Concert featuring the Hartsville Chamber Ensemble on Friday, December 5. The concert at Old St. David's Episcopal Church begins at 6:30 p.m.

The Hartsville Chamber Ensemble, in its ninth season, was organized in the summer of 2006 by a group of Hartsville area musicians who were willing to commit to undertaking a challenging repertoire of vocal music. The ensemble is bound together by a love of singing and dedication to performing at a level of artistry achieved only by many hours of rehearsal. Under the talented direction of Anna White Hill, the group strives to deliver a seamlessly blended sound while singing music from a wide variety of genres. Singers are sopranos Sharman Poplava, Holly Prescott and Becky Hill; altos Victoria Norment, Candace Holcombe and Kaye McElveen; tenors Steve Rogers and Tim Smoak; basses Dave Godshalk, Kyle Henderson and Terry Poplava. The ensemble is assisted by Ronda McElveen, piano.

The variety of music to be performed, which includes pieces by William Walton, John Tavener, and Rene Clausen, has been carefully chosen to enhance the ambience of the beautiful Old St. David's Church. Ensemble members have stated that they find the church an especially thrilling place to sing because of the way sound resonates throughout the historic structure due predominately to the wonderful coved ceiling.

Tickets can be purchased in advance at the Cheraw Community Center - 200 Powe Street. Student tickets and CAC member tickets are available for \$8. Non-CAC members can purchase tickets for \$10. Contact the Cheraw Arts Commission at 843-537-8420 x 12 for additional information.

*What Really Happens The Night Before Christmas*




an original play by Charlette Rhue Bennett

Ansonia Theatre • Saturday, Dec. 6  
 2 Performances 2pm & 6pm

Intriguing insights into the lives of ordinary people!

Tickets \$10 at Lacy's, Trendsettaz, Nu Expressions, Rhue's Too!  
 Info 910-997-2559



**As we near the end of your insurance year, we wanted to remind you to take advantage of any unused vision benefits.**

Every year you receive a maximum amount from your vision insurance company, and in most cases the unused portion of the amount is lost when the new insurance year starts.

**These are benefits you have already paid for!!**

Your vision care is important to us and we want to make sure you get the care you need without overpaying. If you have been postponing your vision exam, now is a great time to come!!

Please call us at 704-694-3618. We look forward to seeing you!!



Holly Allison Kiker, OD



**ANSON FAMILY OPTOMETRIC, PLLC.**


Accepting New Patients • We Accept Most Insurances

1134 Holly Street Wadesboro (On Highway 74 across from Forbes Jewelers)  
 704-694-3618 Monday-Thursday 8:30-5 & Friday 8:30-12:30


# ANSON PEDIATRICS

PROVIDING QUALITY PEDIATRIC CARE IN ANSON COUNTY

**Dr. Elliott, Dr. Peters and the staff at Anson Pediatrics wishes everyone God's blessings for a healthy, happy holiday season.**



Sarah P. Elliott, MD  
 Serving Anson County Since 1996



O. Elliott Peters, MD, FAAP  
 Serving Anson County Since 2008

"Children Are A Gift From God"

Call 704-994-2300 for an Appointment  
 Same Day Sick Appointments Are Available • Accepting New Patients  
 904 Morven Road, Wadesboro, NC 28170