



PPES Mighty Milers Run the Polar Bear 5k

These students represent the Mighty Milers, a running club at Peachland-Polkton Elementary School. The club sponsors are Mrs. Vetter and Ms. Hanna Parker. The students have been preparing for the Polar Bear 5k, which was held this past Saturday, by running twice a week since school began. They are very excited to help raise money for the Toys for Tots campaign and to help make Christmas a little more special for many children in our area.

The Compassionate Friends Meet Every Month

The Compassionate Friends, a support group for parents, grandparents and siblings who have lost a child of any age, welcomes you to attend their monthly meetings. They meet on the second Thursday each month, at 7 p.m. in the Training Room at Pee Dee Electric, located on Highway 52 South in Wadesboro. "We need not walk alone."

For more information call Irvin Thompson at 704-694-8774.




FarmHouseBuffet
704-826-8563

LUNCH WITH SANTA
THIS SUNDAY
Dec 16 11:30-3

SEAFOOD BUFFET & MENU ITEMS
Friday & Saturday 4:30-10

SUNDAY COUNTRY LUNCH BUFFET
11:30-4


8018 Highway 52 North in Ansonville




Merry Christmas & Happy New Year!

ANSON PEDIATRICS

May God bless you on this beautiful season!




Sarah P. Elliott, MD
Serving Anson County
Since 1996

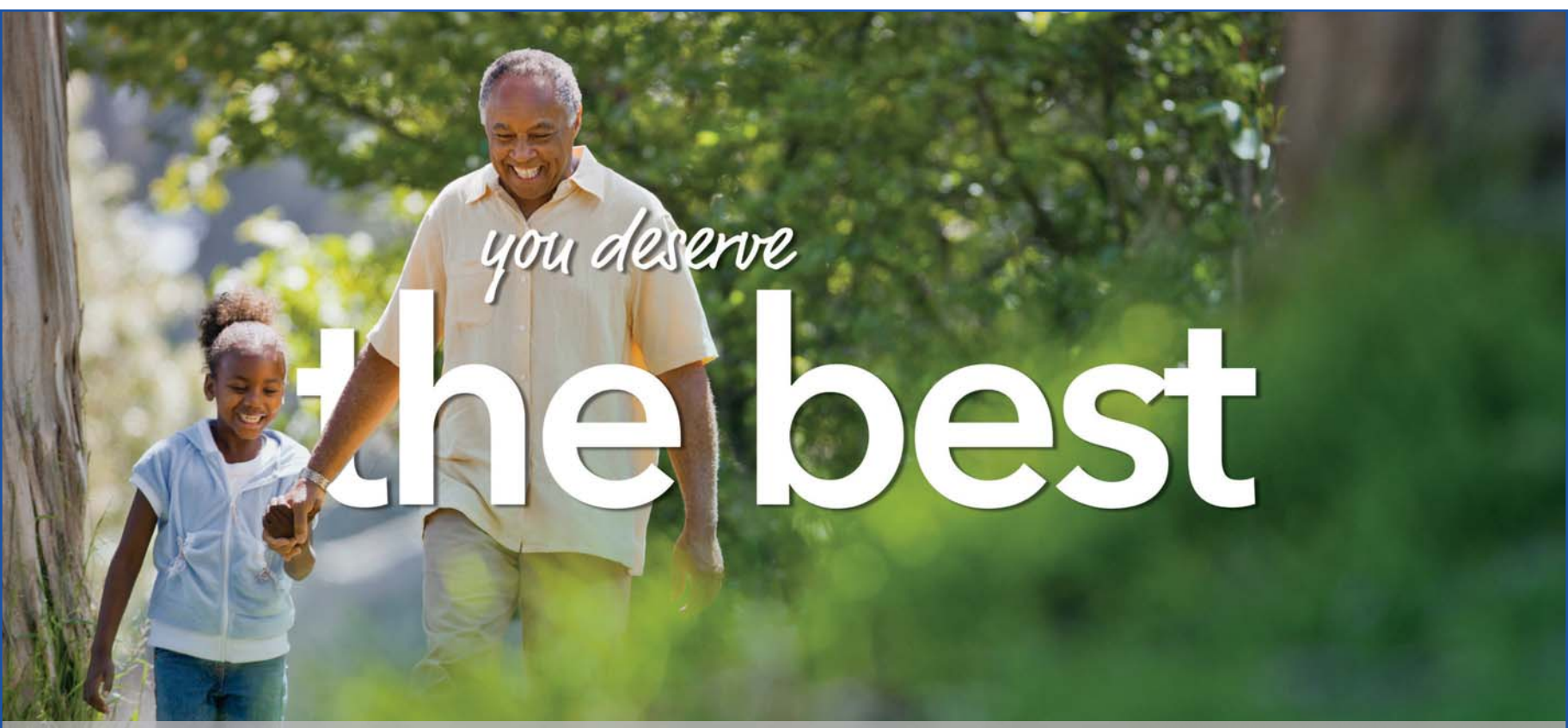


O. Elliott Peters, MD, FAAP
Serving Anson County
Since 2008

"Children Are A Gift From God"

Call 704-994-2300 for an Appointment
904 Morven Road, Wadesboro, NC 28170





Carolinas Primary Care
Here to care for you, close to home.

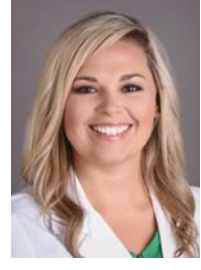
From sick visits and yearly physicals to managing chronic conditions, our providers give you and your family the best care, right here in Anson County.

- We make it easy to get great care:**
- Most health insurance plans accepted
 - Same-day or next-day sick visits available
 - Office hours: 8 a.m. to 8 p.m., Monday - Friday

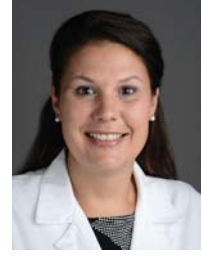
NEW PATIENTS WELCOME
Call 704-994-4500 today to schedule an appointment.



Donald Woodburn, MD



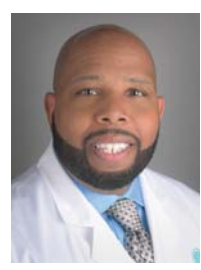
Lucy Crump, FNP-C



Kelly D. Horne, FNP



Crystal P. McKenzie, FNP-C



Barron Taylor, FNP



Sandra Teal, FNP