

USDA Farm Service Agency Encourages Ag Producers to Vote in Anson County Committee Elections

U.S. Department of Agriculture's (USDA) Farm Service Agency (FSA) Anson County Executive Director Amy Yaklin reminds area farmers and producers that 2011 FSA County Committee elections began last Friday, November 4. USDA is mailing ballots to eligible voters. The deadline to return the ballots to the Anson County FSA offices is December 5.

"The Anson County Committee members play a vital role in the funding and operation of government," said Yaklin. "And new County Committee members provide input and influence important decisions on the administration of local disaster and conservation programs. A recent increase in the number of women and minority candidates has helped to better represent the richness of North Carolina agriculture."

Yaklin said Anson County Committee members also provide a link between the agricultural community and USDA. County Committee farmers help deliver local FSA programs, applying their knowledge and judgment on decisions concerning commodity price support programs, conservation programs, incentive indemnity and disaster programs, emergency programs and eligibility. FSA committees operate within official regulations, enforcing federal laws. Each Committee consists of three to 11 members serving three-year terms. Approximately one-third of county committee seats are up for election each year.

To be an eligible voter, Anson County farmers must participate or cooperate in an FSA program. A person who is not of legal voting age, but supervises and conducts the farming operations of an entire farm, may also be eligible to vote. Agricultural producers in each county submitted candidate nominations during the nomination period, which ended on August 1.

Eligible voters not receiving ballots in the coming week can obtain ballots from the Anson County USDA Service Center. December 5 is the last day for voters to submit ballots in person to USDA Anson County Service Center. Ballots returned by mail must be postmarked no later than December 5. Newly elected Committee members and their alternates will take office January 1, 2012.

More information on County Committees, the new 2011 fact sheet and brochures, and other USDA information is on the FSA website at www.fsa.usda.gov/elections or at the Anson County USDA Service Center, 1758 Morven Road in Wadesboro.

Report Says Smoke-Free Law has Reduced Heart Attacks

Last Wednesday the North Carolina Division of Public Health released a study indicating that emergency room visits by people experiencing heart attacks declined by 21 percent in 2010, after the implementation of the state's smoke-free bar and restaurant law on January 1st of last year. Senator William Purcell, lead Senate sponsor of the law, hailed the important public health benefit of smoke-free environments. "As a physician, I am keenly aware of the dangers of exposure to secondhand smoke. It can trigger a heart attack, an asthma attack and a variety of other health conditions. This study clearly demonstrates the positive impact that our smoke-free law has on the people of North Carolina. Reducing hospital heart attack admissions saves lives and can save the state millions in health care costs," he added.

This heart attack study is posted at <http://tinyurl.com/73cxmyj> "N.C. Report on Heart Attack Rate After Smoke-Free Law." North Carolina's law, which was supported broadly by the public health community and by the state's restaurant and hospitality association, made North Carolina the 26th state to enact smoke-free restaurant and bar legislation.

Tips on Managing Backyard Habitat for Reptiles and Amphibians

For people looking to make their property more inviting to reptiles and amphibians, the N.C. Wildlife Resources Commission has on its website a new publication that provides tips on creating suitable habitat for frogs, toads, lizards and snakes.

"Reptiles and Amphibians in Your Backyard," is a color, 8-page publication that was produced by biologists from N.C. State University, the Wildlife Commission, N.C. Partners in Amphibian and Reptile Conservation, and the N.C. Museum of Natural Sciences.

"Many of the practices explained in the book to attract reptiles and amphibians are easy and fairly quick to do, even for folks who aren't gardeners," said Jeff Hall, the Partners in Amphibian and Reptile Conservation Biologist with the Commission. "It's mainly a matter of taking these critters into consideration when managing your lawn and garden. Things such as adding a water garden, planting native vegetation, providing shelter such as rock piles and log and brush piles, and limiting the use of pesticides and chemicals are simple yet effective techniques to create a backyard habitat that will attract a wide variety of wildlife."

Even better for wildlife enthusiasts, these same practices and techniques will also attract birds, butterflies, dragonflies and other wildlife to a backyard.

Along with habitat tips, the book provides information on the life history of reptiles and amphibians as well as the ecological importance of "herps," as reptiles and amphibians are collectively called.

"Some herps are predators that keep the numbers of their prey in check, such as toads that will eat thousands of insects in their lifetime," Hall said. "Others are found on the opposite end of the food chain, like frogs, which make tasty meals for many fishes, birds, mammals and reptiles."

According to Hall, herps also can be good indicators of healthy natural environments. "A habitat rich with reptiles and amphibians usually indicates that area supports a variety of other wildlife," Hall said. "Whereas the absence of herps in an area where we would expect to find them can mean that the habitat is unsuitable for other types of wildlife as well."

More than 160 species of reptiles and amphibians are found in North Carolina, and many of them are common to urban and suburban areas. However, some species have experienced declining populations over the last decade due to a variety of factors stemming from the state's rapid growth.

"North Carolina's human population is growing by leaps and bounds, particularly in urban and suburban areas and with this growth comes habitat loss and fragmentation, increased traffic and roadways, and sedimentation and pollution, all of which wreak havoc on reptile and amphibian populations," Hall said. "People can do a lot to help conserve these populations in their own backyards by thinking about wildlife when managing their lawn and gardens."

Work on the conservation of reptiles and amphibians is funded by the Commission's Nongame and Endangered Wildlife Fund, which supports wildlife research, conservation and management for animals that are not hunted and fished. North Carolinians can support this effort by:

- Donating through the Tax Check-off for Nongame and Endangered Wildlife on their N.C. State Income tax form;
- Registering a vehicle or trailer with a N.C. Wildlife Conservation license plate.
- Mailing in a contribution form, which can be downloaded at ncwildlife.org/give.

For more information on reptiles and amphibian conservation in North Carolina, visit the Commission's website at ncwildlife.org/conserving, or the N.C. Partners in Amphibian and Reptile Conservation's website at www.ncparc.org, or contact Hall at 252-917-1683; jeff.hall@ncwildlife.org.

Joan Baez Comes to Wingate University

Billboard says it best: "Decades pass, yet Joan Baez' voice never gets old." Joan Baez, the iconic voice of a generation, comes to The Batte Fine Arts Center's Austin Auditorium on the Wingate University campus for one night only on Friday, Nov. 19 at 7:30 p.m. For over half a century, Baez has been a potent force in American music, combining art and activism both onstage and off. From her classic self-titled debut LP in 1960 to the landmark Diamonds and Rust (1975) to her acclaimed Dark Chords on a Big Guitar (2003), Baez has remained a folk icon and superstar of the first order, and the social conscience for a generation. On her latest release, the Grammy nominated Day After Tomorrow, she returns to songs that evoke the spirit and message of her defining early work.

Even as an 18-year old, introduced onstage at the first Newport Folk Festival in 1959, her repertoire reflected a different sensibility from her peers. In the traditional songs she mastered, there was an acknowledgment of the human condition. She remains a musical force of nature whose influence is incalculable - marching on the front line of the civil rights movement with Martin Luther King Jr., inspiring Vaclav Havel in his fight for a Czech Republic, singing on the first Amnesty International tour and standing alongside Nelson Mandela when the world celebrated his 90th birthday in London's Hyde Park. She brought the Free Speech Movement into the spotlight, took to the fields with Cesar Chavez, organized resistance to the war in Southeast Asia, then forty years later saluted the Dixie Chicks for their courage to protest war.

Her earliest recordings fed a host of traditional ballads into the rock vernacular, before she unselfconsciously introduced Bob Dylan to the world in 1963. She focused awareness on songwriters ranging from Woody Guthrie, Dylan, Phil Ochs, Richard Farina, and Tim Hardin, to Kris Kristofferson and Mickey Newbury, to Dar Williams, Richard Shindell, Steve Earle and many more. Tickets are \$42 & \$52 and on sale via the Batte Center box office, www.battecenter.org, and the CarolinaTix phone room and website. For a complete schedule of events, ticket prices, as well as membership information call 704-233-8300.

Parks and Rec Youth Basketball

Starting November 14th and running through December 16th, Anson County Parks and Recreation will be offering registration for Youth Basketball, Kindergarten through 12th grade, boys and girls.

You may come to Little Park to register, Monday through Friday, from 8:30 a.m. to 5 p.m. Registration will also take place at these schools:

- Monday, December 5th, 3 - 5 p.m. at Peachland-Polkton and Ansonville Elementary Schools
- Wednesday, December 7th, 3 - 5 p.m. at Wadesboro Elementary School Gym and Wadesboro Primary School

The deadline to register is Friday, December 16th. The cost is \$25 per player. For more information call Wanda Chappell at 704-694-5868 or Wendell Small at 704-694-5751.

Jeremy Burr would like to thank everyone for their support!

He looks forward to serving the community.

REMEMBER SENIOR DAY

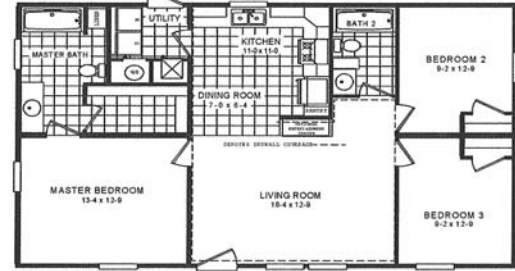
CAPTAIN D'S SEAFOOD KITCHEN 10 Dinners Starting at \$3.99 All Day Wednesday

Each meal includes coffee or 16oz iced tea

Mom Eats FREE On Mother's Day!

126 West Caswell Street in Wadesboro

ZERO Down Payment



\$395* per month 3 Bedroom 2 Bath
360 mos. 6.5% APR *Your land*

1ST CHOICE HOUSING IN MONROE
2008 East Roosevelt Street
Monroe • 704-225-8850
www.1stchoicemonroe.com



Apply, Test and Register!

Spring 2012 on-campus registration for new and returning students:

Nov. 21 - 22 & Jan. 3-6 • Classes start Jan. 9

REGISTRATION LOCATIONS:

L.L. Polk Campus, 680 U.S. 74 West, Polkton
Old Charlotte Highway Campus, 4209 Old Charlotte Hwy., Monroe



South Piedmont COMMUNITY COLLEGE

704.290.5100 • www.spcc.edu

Registration for spring college-credit classes automatically enters you in a drawing for these prizes:

- iPad 2 • iPod Touch
- \$100 Best Buy gift card

An equal opportunity college

2005 Honda Accord



\$12,500

2010 Ford Expedition



\$26,500

2006 Ford Mustang CONVERTIBLE!



\$219 per month

2011 Kia Soul



\$229 per month

2011 Ford Escape XLT



\$259 per month

2010 Chevy Equinox LS



\$225 per month

2010 Ford Focus



\$199 per month

2006 Chrysler PT Cruiser



\$149 per month

2008 Ford Focus SE



\$129 per month

2007 Ford Edge SEL



\$275 per month

Celebrate Thanksgiving With Us!

2002 Chevy Camaro Z-28

ONLY 36,000 MILES! T-Tops, Must See!



\$14,990

2010 Ford Explorer Eddie Bauer



\$377 per month

2008 Nissan Altima



\$249 per month

\$1,800 down, cash or trade. WAC, plus tax, tag, title & dock. 760 Beacon score or higher. Certain conditions apply, see salesperson for details. 5.9% for 60 mos on 2006 models, 5.49% for 66 mos on 2007 models, 4.9% for 72 mos on 2008 & 2009 models, 3.9% for 75 mos on 2010 & 2011 models.

BEACHUM & LEE FORD



Highway 74 West in Wadesboro • Sales 704-694-4101 • Service 704-694-3104

Business is GREAT...There Must Be a Reason!